

INTERVAL STUDY

Goals: To acquire useful control of intervals and increase technical velocity.

EXPAND EACH EXERCISE TO THE FULL RANGE OF YOUR INSTRUMENT!

① m^2 (by m^2) etc. etc.

② m^2 (by M^2) etc. etc. REPEAT ON G^4

③ m^2 (by M^2-A) etc. etc. REPEAT ON G^4

④ m^2 (by M^2-A) etc. etc. REPEAT ON $F^{\#}$

⑤ m^2 (by m^3) Dim. etc. etc. REPEAT ON G^4 & A^4

⑥ m^2 (by m^3-A) Dim. etc. etc. REPEAT ON G^4 & A^b

⑦ m^2 (by m^3-A) Dim. etc. etc. REPEAT ON G^b & G^4

⑧ m^2 (by M^3) Aug. etc. etc. REPEAT ON G^4 , A^b , & A^4

⑨ m^2 (by M^3-A) Aug. etc. etc. REPEAT ON G^4 , A^b , & A^4

m² (by M³-A) Aug.

⑩ Musical notation for exercise 10. It consists of two staves of music. The first staff shows a sequence of notes: G^b, A^b, B^b, C, D, E, F, G^b. The second staff shows a similar sequence: G^b, A^b, B^b, C, D, E, F, G^b. The notes are connected by stems and beams. The exercise is labeled "m² (by M³-A) Aug." and "etc. REPEAT ON G^b, G^b, A^b".

M² (by m²)

⑪ Musical notation for exercise 11. It consists of two staves of music. The first staff shows a sequence of notes: G^b, A^b, B^b, C, D, E, F, G^b. The second staff shows a similar sequence: G^b, A^b, B^b, C, D, E, F, G^b. The notes are connected by stems and beams. The exercise is labeled "M² (by m²)" and "etc.".

M² (by m²-A)

⑫ Musical notation for exercise 12. It consists of two staves of music. The first staff shows a sequence of notes: G^b, A^b, B^b, C, D, E, F, G^b. The second staff shows a similar sequence: G^b, A^b, B^b, C, D, E, F, G^b. The notes are connected by stems and beams. The exercise is labeled "M² (by m²-A)" and "etc. REPEAT ON A^b".

M² (by M²-A) W-T

⑬ Musical notation for exercise 13. It consists of two staves of music. The first staff shows a sequence of notes: G^b, A^b, B^b, C, D, E, F, G^b. The second staff shows a similar sequence: G^b, A^b, B^b, C, D, E, F, G^b. The notes are connected by stems and beams. The exercise is labeled "M² (by M²-A) W-T" and "etc. REPEAT ON A^b".

M² (by M²-A) W-T

⑭ Musical notation for exercise 14. It consists of two staves of music. The first staff shows a sequence of notes: G^b, A^b, B^b, C, D, E, F, G^b. The second staff shows a similar sequence: G^b, A^b, B^b, C, D, E, F, G^b. The notes are connected by stems and beams. The exercise is labeled "M² (by M²-A) W-T" and "etc. REPEAT ON G^b".

M² (by m³) Dim.

⑮ Musical notation for exercise 15. It consists of two staves of music. The first staff shows a sequence of notes: G^b, A^b, B^b, C, D, E, F, G^b. The second staff shows a similar sequence: G^b, A^b, B^b, C, D, E, F, G^b. The notes are connected by stems and beams. The exercise is labeled "M² (by m³) Dim." and "etc. REPEAT ON A^b & A⁷".

M² (by m³-A) Dim.

⑯ Musical notation for exercise 16. It consists of two staves of music. The first staff shows a sequence of notes: G^b, A^b, B^b, C, D, E, F, G^b. The second staff shows a similar sequence: G^b, A^b, B^b, C, D, E, F, G^b. The notes are connected by stems and beams. The exercise is labeled "M² (by m³-A) Dim." and "etc. REPEAT ON A^b & A⁷".

M² (by m³-A) Dim.

⑰ Musical notation for exercise 17. It consists of two staves of music. The first staff shows a sequence of notes: G^b, A^b, B^b, C, D, E, F, G^b. The second staff shows a similar sequence: G^b, A^b, B^b, C, D, E, F, G^b. The notes are connected by stems and beams. The exercise is labeled "M² (by m³-A) Dim." and "etc. REPEAT ON G^b & G⁷".

M² (by M³) W-T

⑱ Musical notation for exercise 18. It consists of two staves of music. The first staff shows a sequence of notes: G^b, A^b, B^b, C, D, E, F, G^b. The second staff shows a similar sequence: G^b, A^b, B^b, C, D, E, F, G^b. The notes are connected by stems and beams. The exercise is labeled "M² (by M³) W-T" and "etc. REPEAT ON A^b".

m³ (by m²)

⑲ Musical notation for exercise 19. It consists of two staves of music. The first staff shows a sequence of notes: G^b, A^b, B^b, C, D, E, F, G^b. The second staff shows a similar sequence: G^b, A^b, B^b, C, D, E, F, G^b. The notes are connected by stems and beams. The exercise is labeled "m³ (by m²)" and "etc.".

20 m_3 (by m_2-A) etc. etc.

21 m_3 (by m_2-A) etc. etc.

22 m_3 (by M_2-A) etc. etc. REPEAT ON A4

23 m_3 (by M_2-A) etc. etc. REPEAT ON F#

24 m_3 (by M_3) Aug. etc. etc. REPEAT ON A4, Bb, B4

25 m_3 (by M_3-A) Aug. etc. etc. REPEAT ON A4, Bb, B4

26 m_3 (by M_3-A) Aug. etc. etc. REPEAT ON Gb, G4, Ab

27 M_3 (by m_2) etc. etc.

28 M_3 (by m_2-A) etc. etc.

29 M_3 (by m_2-A) etc. etc.

P4 (by M2-A)

40 etc. REPEAT ON F#

P4 (by M2-A)

41 etc. REPEAT ON Bb

P4 (by m3) Dim.

42 etc. REPEAT ON Bb, C

P4 (by m3-A) Dim.

43 etc. REPEAT ON F#, G

P4 (by m3-A) Dim.

44 etc. REPEAT ON Bb, C

P4 (by M3) Aug.

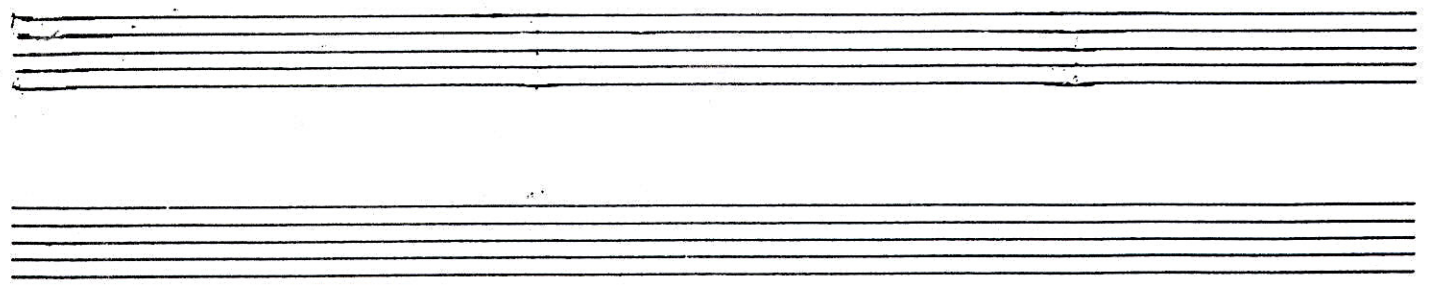
45 etc. REPEAT ON Bb, C, D

P4 (by M3-A) Aug.

46 etc. REPEAT ON F#, G, Ab

P4 (by M3-A) Aug.

47 etc. REPEAT ON Bb, C, D



3 & 4-NOTE GROUPS ~ INTERVAL PATTERNS #1-47 (PP. 1-5) ARE ALL IN 2-NOTE GROUPINGS. BELOW ARE EXAMPLES OF 3 & 4-NOTE POSSIBILITIES.

m² (by M²) implied w-t

etc. etc.

m³ (by m²-A) implied cycle

etc. REPEAT ON F#

M³ (by m³-A) 2 Aug.

etc. REPEAT ON F# & G

P⁴ (by m³-A)

etc. REPEAT ON F# & G

OTHER SUGGESTIONS

- ① Increase interval size (A⁴, P⁵, m⁶, M⁶, m⁷, & M⁷)
- ② Increase distances between interval groups (P⁴, A⁴, P⁵, etc.)